



# RS4U-B641-P&E

Renewable energy, Renewable system.  
Today's resource for a brighter tomorrow!

## Compact System for Industrial Automation & Control Targeting Power & Energy

### Key Features

- New Apollo Lake platform
- 4K codec encode & decode ability
- 9-32V wide range DC in
- eAPI function control
- CFEX support with SPI ROM inside

### Specification

Chassis	WEBS-3560B
PSU	9V~32V DC-IN
Storage	CFEX 2GB w/SPI & 64GB SATA SSD
M/B	PCOM-B641 & PCOM-C605, w/N3350 Apollo lake, 2GB X1 DDR3L
Operating System	Cent OS 7
Operating Temperature	-20~50 °C

### Memory

DDR3L SO-DIMM		
B473F360	2GB	(GP).DDR3L SO-DIMM DRAM Module 2GB DDR3-1333 (30mi) 1.35V , 256x8, Hynix

### Adaptor

APH-3051, FSP060-DIBAN2. 60W AC/DC Power Adapter.  
DC-plug with screw

### Storage

CFEX / SLC with SPI		
B473D890	2GB	(GP). 2 GB CFEX Card ,SPI. Toshiba SLC (CFXST2GSC / 4G x4 / 4CH)
2.5' SATA III SSD SMI 2246EN + MICRON MLC		
B473G010	64GB	(GP). 64GB. SATA III. TS46EMM 2.5 Inch SSD. Micron/Transcend

### Wall Mount

B787D340, WEBS-3560.Wall mount Kit

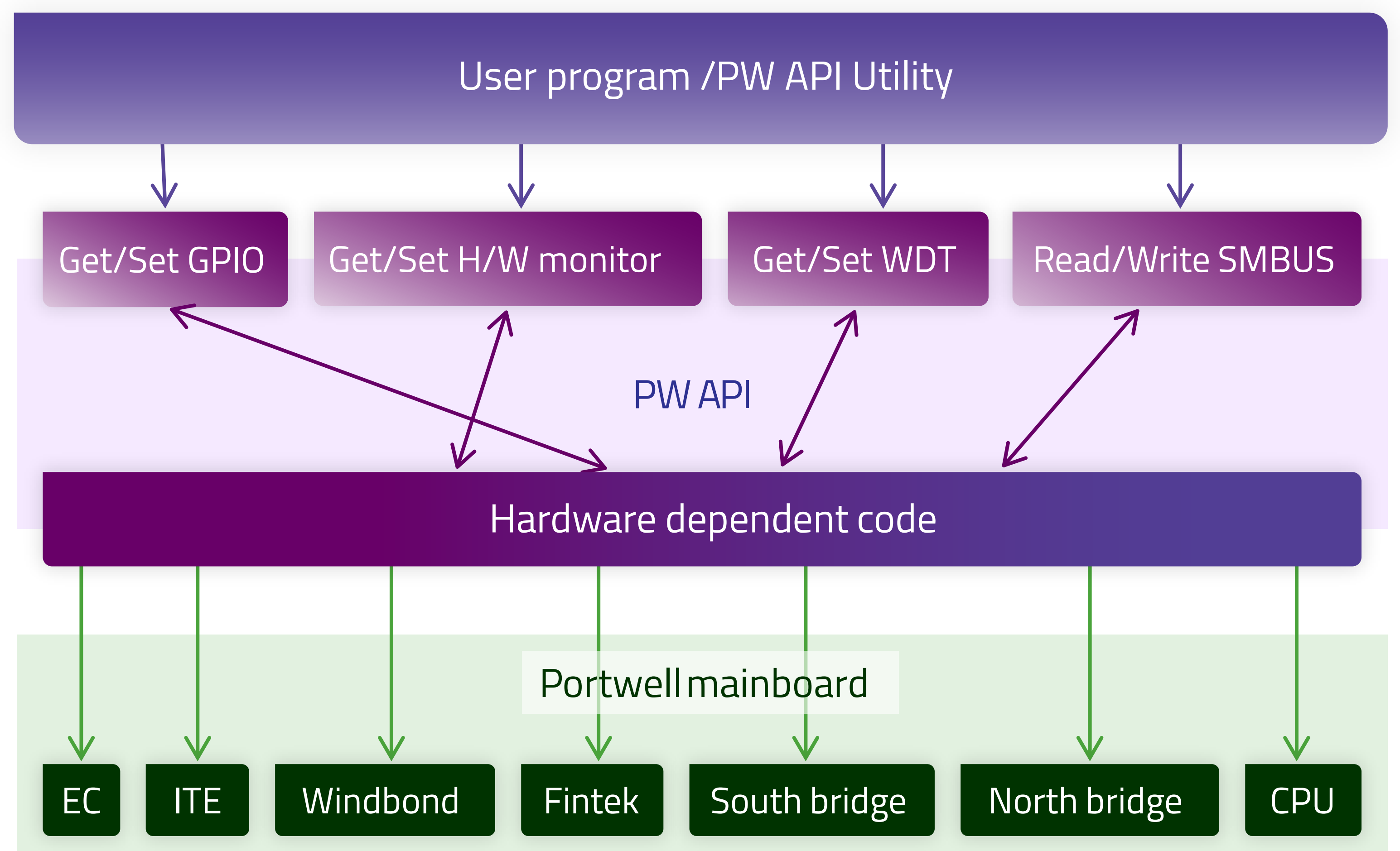
### Key Benefits

- Low power and cost
- Support 4Kx2K high resolution
- 50G static shock and 5Grms dynamic vibration
- Storage and security functions on CFEX
- Wide DC in support for different usage
- Easy H/W control by eAPI



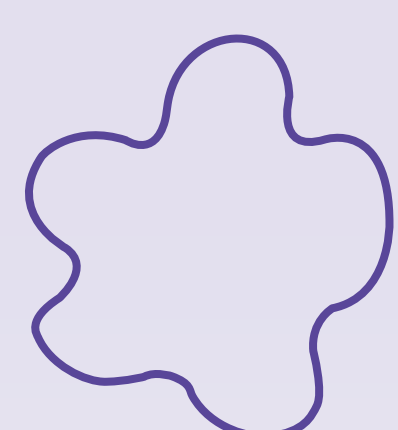
### API: Application Programming Interface

Portwell API(Application Programming Interface) is a bridge to simplify and enhance H/W & S/W application implementation efficiency



### What API do ?

- Hardware monitor- (PWR, Temp, Fan speed)
- Fan control - (Temp controls fan speed)
- GPIO control (programmable)
- WDT (Reset, Show-down, NMI)
- SMBus (controlled by PCH)
- I<sup>2</sup>C



### Portwell, Inc. Headquarters

No. 242, Bo'AI St., Shu-Lin Dist,  
New Taipei City 238, Taiwan  
Tel: +886-2-77318888  
Fax: +886-2-77319888  
E-mail: info@portwell.com.tw  
http://www.portwell.com.tw

**American Portwell**  
(Fremont, CA)  
44200 Christy St.,Fremont, CA 94538,  
USA  
Tel: +1-510-403-3399  
Fax: +1-510-403-3184  
E-mail: info@portwell.com  
http://www.portwell.com

**Portwell Latin America**  
(Brazil)  
Rua Engenheiro Roberto Fischer, 208,  
Sala No.3-Parque Industrial software  
CEP 81250-025-CIC-Curitiba-Brazil  
Tel: +55-41-3121-7200  
Tel: +55-41-3121-7201  
E-mail: vendas@portwell.com.br  
http:// www.portwell.com.br

**Portwell Japan, Inc.**  
(Tokyo)  
〒112-0011 4-27-10, Sengoku,  
Bunkyo-ku, Tokyo, Japan  
Tel: +81-3-6902-9225  
Fax: +81-3-6902-9226  
E-mail: info@portwell.co.jp  
http://www.portwell.co.jp

**European Portwell**  
Schillingweg 3, 2153 PL  
Nieuw Vennep, The Netherlands  
Tel: +31-252-620790  
Fax: +31-252-621325  
E-mail: info@portwell.eu  
http://www.portwell.eu

**Portwell Japan, Inc.**  
(Osaka)  
〒532-0004 Ste.501 Nippo Shin-osaka  
Dai-2 Bldg, 1-8-33 Nishi-Miyahara,  
Yodogawa-ku Osaka Japan  
Tel: +81-6-4807-7721  
Fax: +81-6-4807-7720  
E-mail: info@portwell.co.jp  
http://www.portwell.co.jp

**Portwell UK Ltd.**  
Office TH2  
Trident House, Trident Park Basil  
Hill Road, Didcot, OX11 7HJ, UK  
Tel: +44-1235-750760  
Fax: +44-1235-750761  
E-mail: info@portwell.co.uk  
http://www.portwell.co.uk

**Portwell Korea, Inc.**  
O-BIZ Tower 1901, No.126,  
Beolmal-ro, Dongan-gu, Anyang-si,  
Gyeonggi-do, Korea, 431-060  
Tel: +82-31-450-3043  
Fax: +82-31-450-3044  
E-mail: info@portwell.co.kr  
http://www.portwell.co.kr

**Portwell Deutschland GmbH**  
Otto-Hahn-Str. 48, D-63303 Dreieich  
Layout, Banaswadi, Bangalore -560043,  
India  
Tel: +49-6103-3008-0  
Fax: +49-6103-3008-199  
E-mail: info@portwell.eu  
http://www.portwell.de

**Shanghai Portwell**  
(201612), Room 1303-1, Building 33,  
No.258, Xinhuan Highway, Songjiang  
District, Shanghai  
Tel: +86-21-5771-2505  
Fax: +86-21-5772-2965  
E-mail: info@portwell.com.cn  
http://www.portwell.com.cn

**Portwell India Technology**  
2<sup>nd</sup> Floor, 5M-665, 5<sup>th</sup> Main Road, OMBR  
Layout, Banaswadi, Bangalore -560043,  
India  
Tel: +91-80-41684255  
E-mail: info@portwell.in  
http://www.portwell.in