

PCOM-B706GT



COM-Express® Type 7 Basic module with AMD Ryzen™ Embedded V3000 CPU Family equipped on-module NVME SSD

- AMD Ryzen™ Embedded V3000 CPU featuring “Zen 3” core
- 2x DDR5 4800 MT/s SO-DIMM, 2x 10G KR Port
- 10W ~ 54W cTDP with -40 ~ 85 °C support on selected SKU
- Up to 16x PCIe Gen 4 lanes for high speed interconnection
- Optional on-module PCIe x2 NVMe storage



PNAC-72720



2U High Performance Platform with Intel® Dual 3rd Gen Xeon® Scalable CPUs and up to Eight Network Modules

- Dual Intel® 3rd Gen Xeon® Scalable CPU (formerly Ice Lake-SP)
- 20x DDR4-3200 RDIMM ECC Memory (Up to 1280GB)
- Up to 8x Proprietary Network Modules for Various Ethernet Configurations
- 2x PCIe x16 Expansion slots for RAID/FPGA/GPU/DPU cards
- 2x M.2 SSD (1x SATA & 1x PCIe) and 2x 2.5” SATA HDD swappable
- Redundant Power Supply Unit (2U 1300W)



ANS-9142S



Compact System with Intel® Denverton C3436L (4C) / C3338R (2C) Processor for SD-WAN solution

- Intel Atom® C3436L(4C) / C3338R(2C) Processor (formerly Denverton)
- 1x DDR4 1866 MT/s ECC and non-ECC SO-DIMM up to 32 GB
- 8x GbE RJ45, 1x RJ45 Console, 2x USB 3.0
- 1x TPM 2.0 (on-board)
- 1x M.2 Key-E Slot (PCIe/ USB2.0), 1x M.2 Key-B Slot (PCIe/ USB3.0), 1x M.2 Key-M Slot (SATA)
- Design ready for 5G and Wi-Fi 6 (802.11ax)
- Compact design 2 in 1U rackmount



ANS-7A44G



Fanless Desktop Platform with AMD V3000 V3C18I processor and six 2.5GbE plus two 10GbE Ports for SD-WAN Solution

- AMD V3C18I processor series with 8 cores and 16 threads
- Fanless Desktop with wide-range operating temperature
- 2x DDR5 SO-DIMM 4800MT/s memory up to 64GB
- 2x M.2 Key-M 2242/2280 slots (PCIe x4)
- 6x 2.5GbE RJ45 with 2-pair bypass and 2x 10GbE SFP+
- 2x M.2 Key-B, 3042/3052 (USB 3.0) with 2x Micro SIM
- 1x M.2 Key A-E, 2230/3042 (PCIe + USB 2.0)



PECA-6232T



DIN-rail Industrial Gateway with Intel Atom® x6000E Series and up to 6 LAN

- Intel Atom® dual/quad core x6000E series SoC (formerly Elkhart Lake)
- DDR4-3200 SO-DIMM up to 32GB- DDR4 3200 MT/s Non-ECC SO-DIMM up to 32GB
- 2x GbE Bypass LAN, 2x 2.5GbE Bypass LAN and 2x SFP
- Wide-range operation temperature from -40°C to 70°C
- Wide-range power input of 9 to 36V DC with dual power inputs



Portwell



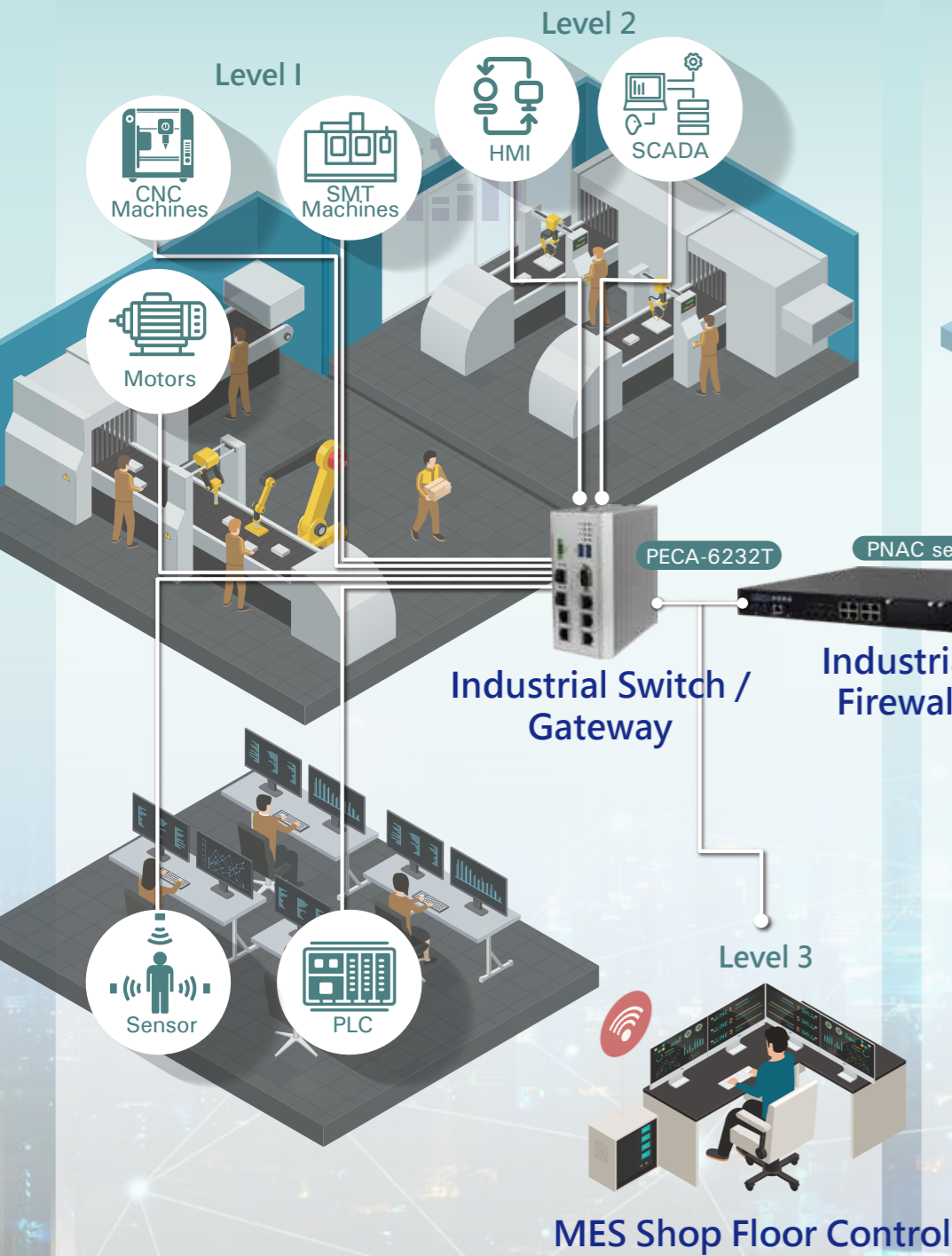
European Portwell Technology B.V.

Schillingweg 3, 2153 PL Nieuw Vennep, The Netherlands
Phone: +31-252-278800 | E-mail: info@portwell.eu
<https://www.portwell.eu>

OT

Operation Technology

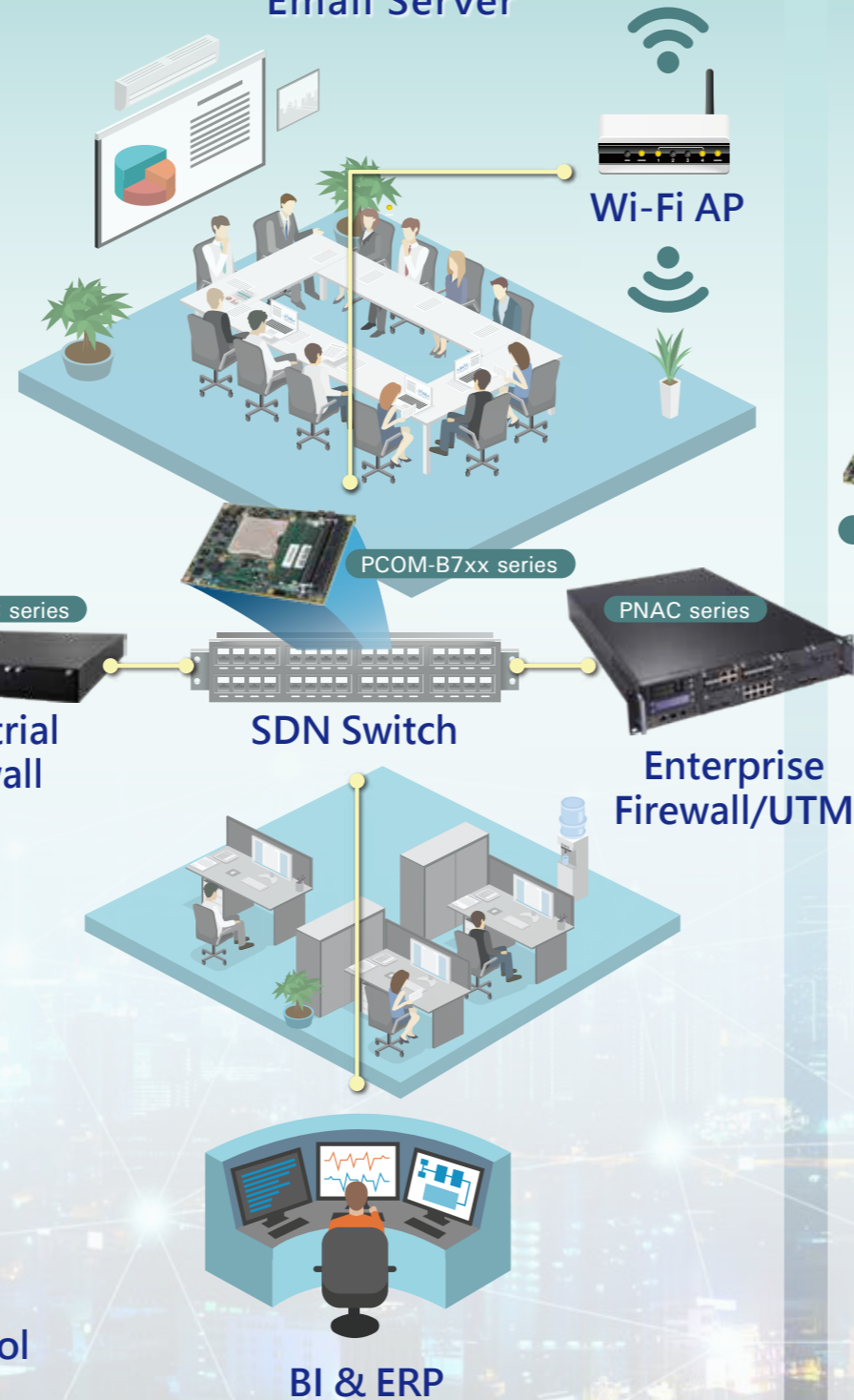
Machinery, RTUs, HMI, SCADA, PLC, Modbus, Sensor, Robots



IT

Information Technology

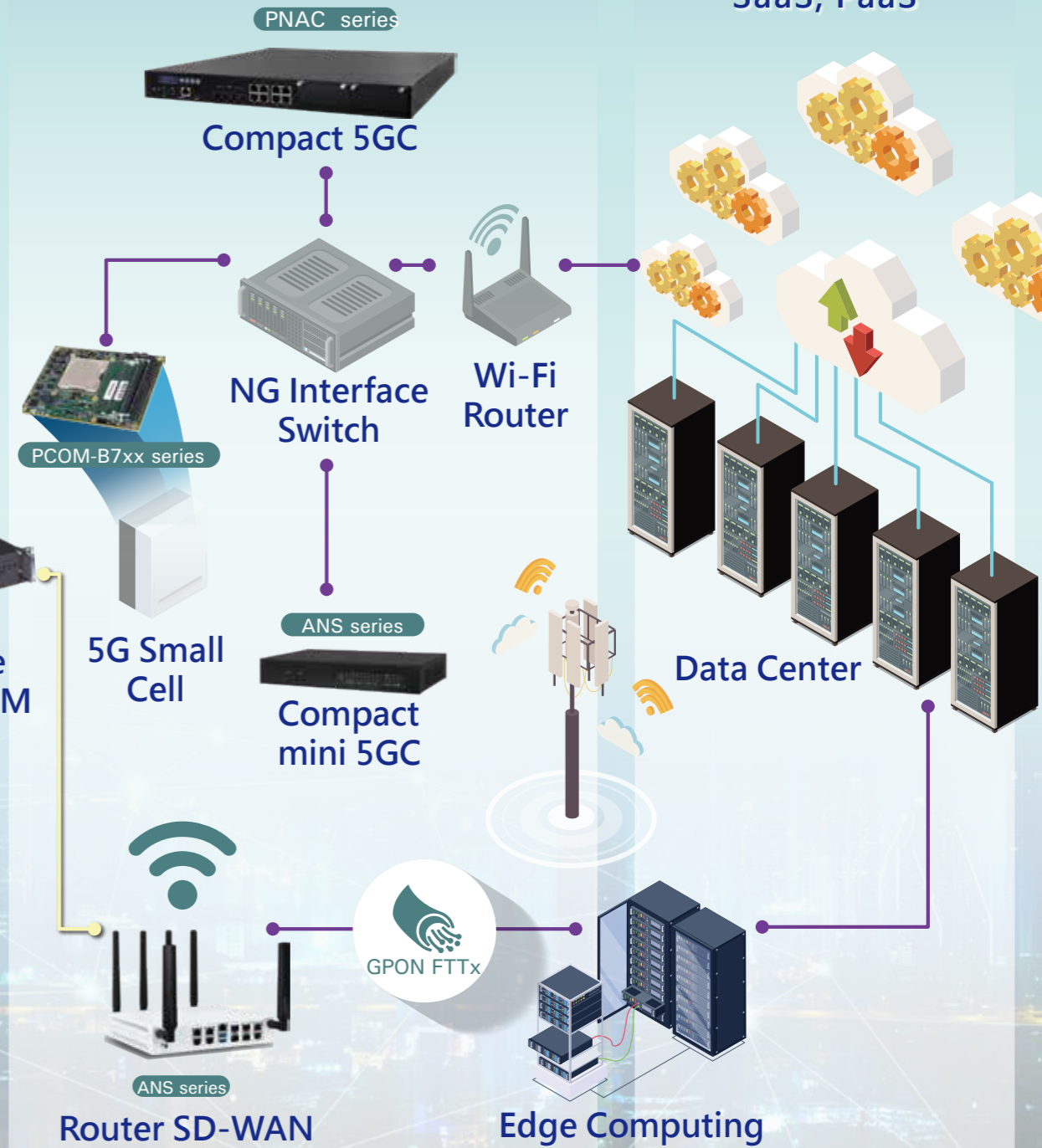
BI, SQL, CRM, ERP, Asset Management, Office PCs, Printers, Email Server



CT

Communication Technology

5G, 4G, NB-IoT, Wi-Fi 6 /7, Satellite Communication



Cloud

Cloud Service

Data Center, SaaS, PaaS

